

www.ringer.at



AluDEK

THE EXTRA-LIGHT SLAB FORMWORK

**LET'S
BUILD**



RINGER
SCAFFOLDING + FORMWORK



HEADQUARTERS IN REGAU

Your reliable partner for scaffolding and formwork.

RINGER quality since 1944:

- Flexible and quick solutions
- Absolute reliability
- Personal consultation on site
- Fast customised solutions
- We keep our promises
- With absolute passion
- A real family-run company

What are we waiting for? Let's build.

Our head office and the heart of the company is the 111.000 m² manufacturing and logistics facility based in Regau, Austria. Incorporating worldwide distribution to over 50 countries and providing a centre of excellence for research and development - makes RINGER a formidable formwork and scaffolding manufacturer.

With subsidiaries in Slovenia, Croatia, Hungary, Czech Republic and Germany, RINGER provides first class design solutions and on-site supervision for the most complex of projects.

Supporting international customers worldwide makes RINGER the ideal partner for all construction needs.





Slab formwork for rapid construction process

RINGER SLAB FORMWORK SYSTEMS ARE THE PERFECT SOLUTION FOR YOUR CONSTRUCTION SITE .

LIGHTWEIGHT PANELS AND SAFE INSTALLATION FORM THE BASIS FOR SUCCESSFUL CONSTRUCTION SITES.

No matter whether you are dealing with large or small, simple or complicated slab layouts, the RINGER slab formwork systems will always be the right choice.

AluDEK

- Beamless hand-set formwork in a lightweight aluminium construction
- Quick and secure forming from the ground
- Compatible with AL2000 wall formwork
- Only three main components (prop, head, panel)
- Only one head necessary for edge, joint and corner areas



AluDEK

THE EXTRA LIGHT SLAB FORMWORK MADE OF ALUMINIUM FOR RAPID, FLEXIBLE FORMING.

The AluDEK is a beamless hand-set formwork in a lightweight aluminium design (16.0 kg/m²).

The system combines the benefits of modular slab formwork with those of a conventional flex formwork. This means rapid forming in of typical areas and flexible forming of infill zones.

The system consists of only three main components: prop, head and panel. The AluDEK head is suitable for edges, joints and corners and therefore particularly efficient and easy to use.

Product features

AluDEK

> Extremely fast

- Fastest floor plan in 0,14h/m² shuttered and un-shuttered
- On average only 0,19h/m²
- On average 10%* faster than the second fastest system

* Working Time Guidelines in Building Construction (ARH), Manual on Work Organisation in Construction „Formwork/System formwork slabs 2022“, Zeitechnik-Verlag

> Performance

- Lightweight panels weighing 16 kg/m²
- Up to 35cm thick slabs without additional support
- Greater slab thicknesses possible with additional support

> Versatility

- Panel size 1.35 x 1.35m (1.82m²)
- Any floor plan feasible

> Time and cost savings

- Few individual parts and low weight
- Only one head for all purposes (edges, joints and corners)
- Large-scale forming thanks to 1.82m² panels
- Standard props with 20 kN capacity sufficient

> Stable and ergonomic geometry

- Stable aluminium panels
- Easy to clean

> Safe installation and dismantling

- From floor level
- Simple mounting and lifting of panels
- Drophead with quick lowering system for safe stripping

> Safe and economical storage and transportation

> Compatible with AL2000 wall formwork panels

Few components faster forming

The innovative AluDEK slab formwork system consists of only three main components:

- AluDEK panel
- AluDEK head
- Standard prop 20 kN



AluDEK head for all purposes



Joint area



Edge area



Corner area

Clever details

optimum handling



Installation by only two people

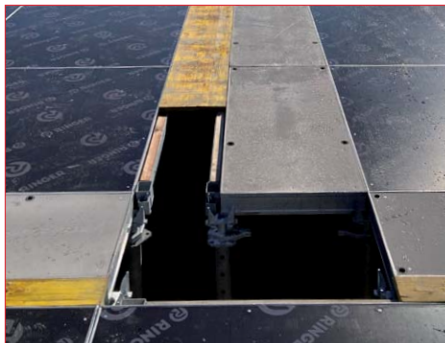
The lightweight aluminium profiles of the AluDEK panels make them particularly light. At only 16 kg/m², they can be carried by just one person and installed from the ground up by only two people.

Not having to work from the top means the system offers maximum safety.



35cm slab thickness with standard props

20 kN standard floor props are sufficient for forming slabs up to 35cm thick. Even thicker slabs are possible with additional support.



Infill zones

The infill beams mounted in the AluDEK head enable quick and simple forming of infill zones and fixtures. The infill beam is reversible and suitable for 27 mm and 21 mm thick formwork sheets.



Wall formwork as slab formwork

The AluDEK can be combined with any AL2000 panels. The profiles are perfectly coordinated so that any floor plan can be formed efficiently.

Clever details

optimum handling



Quick lowering system for efficient stripping

The AluDEK head is equipped with a quick lowering system. During stripping, the lowering wedge is loosened with a hammer so that the formwork panels can be conveniently dismantled.



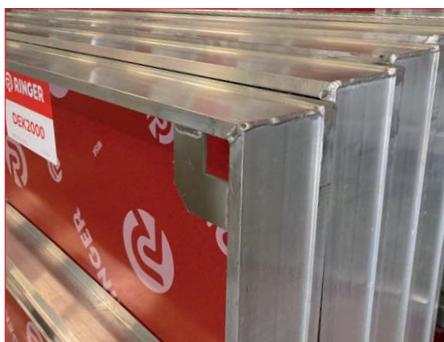
Stripping at any point

The AluDEK is designed such that the individual formwork panels can be removed from any point, meaning that it is also easier to add backpropping.



Space-saving and secure pallet

The AluDEK formwork panels are transported in pallets for aluminium formwork with additional safety brackets. They allow the panels to be stacked and manipulated securely, while saving on space.



Easy to clean

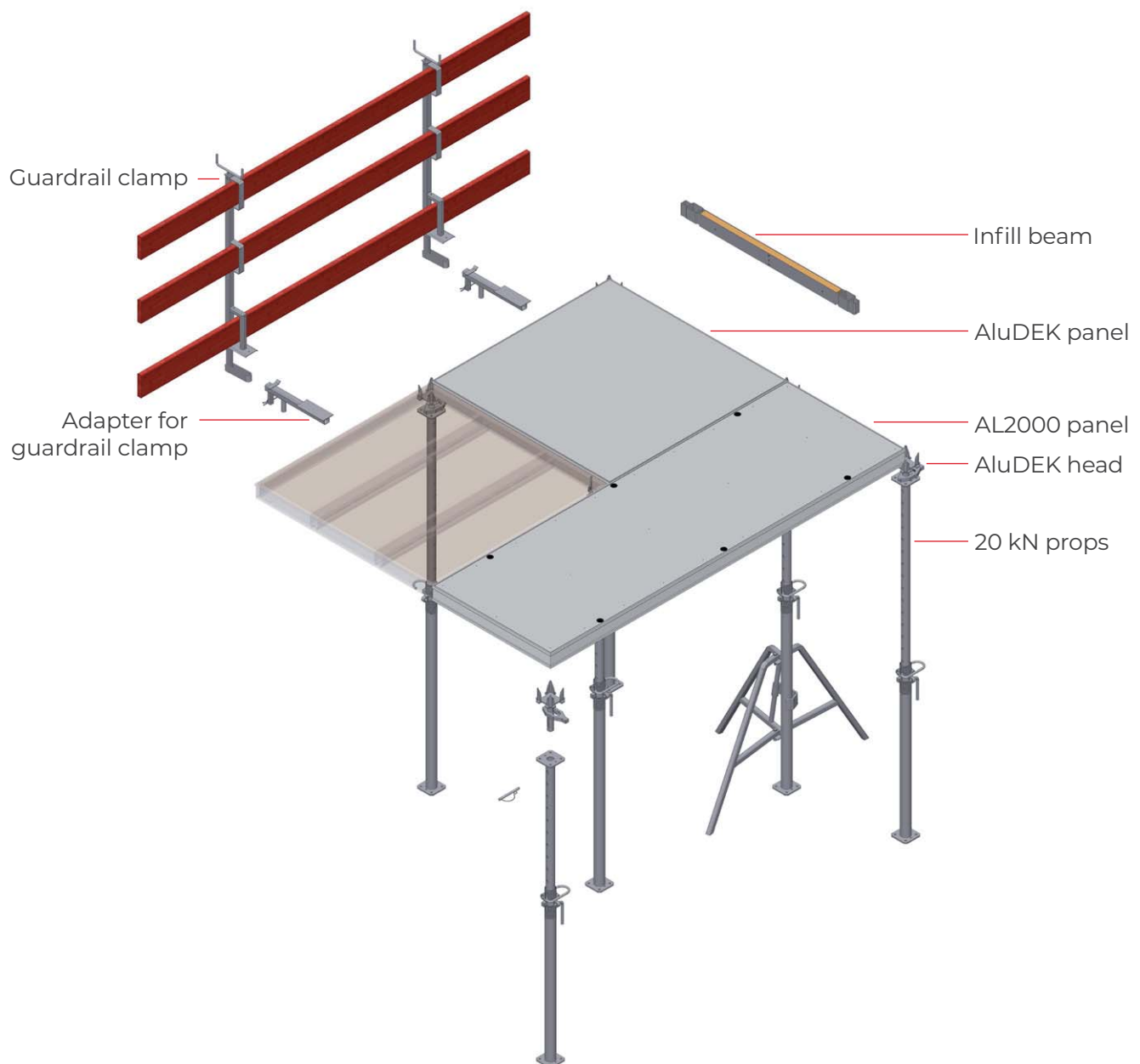
The smooth, closed profiles are very easy to clean. Any concrete that sticks to them can be removed quickly and easily.

Smart combination

AluDEK combined with AL2000

The AluDEK slab formwork is designed such that the panels can be combined with AL2000 wall formwork panels. This makes it possible to form any floor plan efficiently. Infill beams and formwork sheets can be used in infill zones.

The necessary fall-protection can also be implemented easily with the RINGER guardrail clamps and matching adapters.



Plywood for perfect concrete results



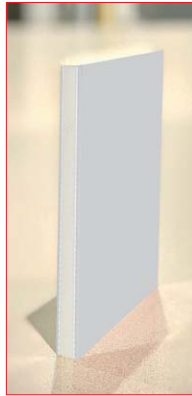
Phenolic coated plywood

- Sturdy multi-layered board of cross-glued birch wood, 12mm thick
- Double-side phenolic resin sealing [220g/m²]
- Edges sealed with water resistant varnish
- Smooth surface for superlative concrete results
- Excellent strength to weight ratio
- Simple recycling



Plastic coated plywood

- Sturdy multi-layered board from cross-glued birch wood, 12mm thick
- Double-side plastic coating [1.8mm]
- Resistant to chemicals and UV
- Easy nailing, no fragmentation
- Maximum abrasion resistance, no jolting marks
- No onion effect & no embrittlement
- Perfect fair-faced concrete quality
- No moisture penetration of the wood core
- Simple recycling



Solid-plastic plywood (ALKUS)

- Alkus solid plastic plywood, 12,9mm thick
- No moisture absorption
- More than 1000 applications
- No shrinking, swelling or rotting
- No rippling or discolouration of the concrete
- High UV resistance and abrasion resistance
- High resistance to acids, alkalis and chemicals
- Easy nailing & simple repairs
- Perfect fair-faced concrete quality
- Easy and fast cleaning using the high pressure cleaner



High quality slabs

THE SQUARE FLOOR PLAN OF THE FORMWORK PANELS ENSURES A CLEAR JOINT PATTERN AT THE SLABS.

Article list

AluDEK



Head for AluDEK
with quick lowering system



Assembly bar for AluDEK,
aluminium



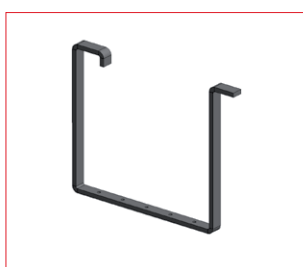
Infill beam 21+27mm
135cm / 90cm



Adjustable quick clamp
short for AluDEK



AluDEK adapter for guard-
rail clamp



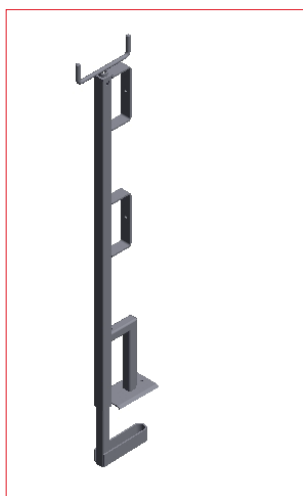
H20 suspension bracket
for AluDEK



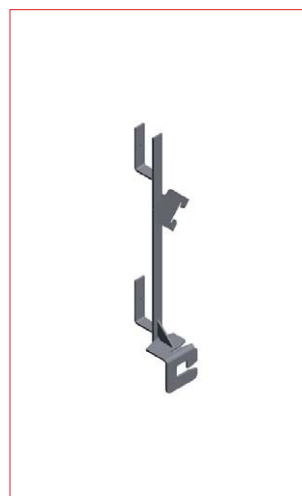
Tripod for props



20 kN prop



Guardrail clamp



Guardrail clamp adaptor
for side protection grid



Side protection grid
2.70m / 1.45m

AluDEK panel

Art. Nr.	Bezeichnung		m ²	Gewicht
10004533	AluDEK	Panel 135/135 Phenolic-ply	1,82m ²	29,80 kg
10002092	AluDEK	Panel 135/135 Plastic-ply	1,82m ²	30,20 kg
10004585	AluDEK	Panel 135/135 Alkus	1,82m ²	30,30 kg
10000742	AluDEK	Panel 135/90 Phenolic-ply	1,22m ²	21,90 kg
10000740	AluDEK	Panel 135/90 Plastic-ply	1,22m ²	22,10 kg
10002415	AluDEK	Panel 135/90 Alkus	1,22m ²	24,20 kg
10002423	AluDEK	Panel 135/60 Phenolic-ply	0,81m ²	16,10 kg
10002421	AluDEK	Panel 135/60 Plastic-ply	0,81m ²	16,30 kg
10002425	AluDEK	Panel 135/60 Alkus	0,81m ²	16,40 kg
10002424	AluDEK	Panel 135/45 Phenolic-ply	0,61m ²	12,50 kg
10002422	AluDEK	Panel 135/45 Plastic-ply	0,61m ²	12,60 kg
10002426	AluDEK	Panel 135/45 Alkus	0,61m ²	12,70 kg



AL2000 panel (plastic plywood)

Art. no.	Description		m ²	Weight
10001090	AL2000	Panel 270/90	2.43m ²	54.00 kg
10004218	AL2000	Panel 270/60	1.62m ²	42.00 kg
10004217	AL2000	Panel 270/50	1.35m ²	37.00 kg
10004216	AL2000	Panel 270/45	1.22m ²	34.00 kg
10000084	AL2000	Panel 270/40	1.08m ²	32.00 kg
10004215	AL2000	Panel 270/30	0.81m ²	26.00 kg
10004214	AL2000	Panel 270/25	0.68m ²	24.00 kg
10001096	AL2000	Panel 135/90	1.22m ²	28.50 kg
10001095	AL2000	Panel 135/60	0.81m ²	21.00 kg
10001094	AL2000	Panel 135/50	0.68m ²	18.50 kg
10001093	AL2000	Panel 135/45	0.61m ²	16.50 kg
10002266	AL2000	Panel 135/40	0.54m ²	15.00 kg
10001092	AL2000	Panel 135/30	0.41m ²	12.00 kg
10001091	AL2000	Panel 135/25	0.34m ²	11.00 kg



Reference projects



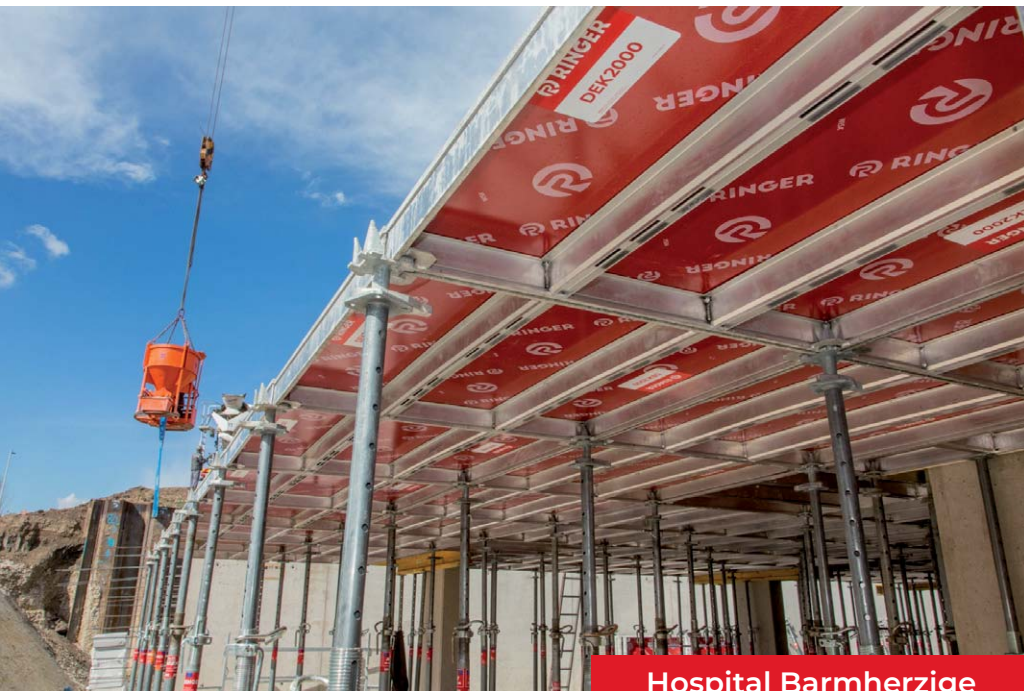
**Residential complex
St. Wolfgang**

The typical areas were formed with AluDEK panels, the infill zones with AL2000 panels and formwork sheets.



**Residential complex
Alkoven**

For 30cm thick slabs, standard props are sufficient.



**Hospital Barmherzige
Brüder Graz**

The lightweight slab formwork panels were ideal as they can be installed from floor level.

Up to 1,500m² large sections
were poured in one
concreting process.



**School campus
Frankenburg**

LET'S BUILD



RINGER GmbH

A-4844 Regau
Römerweg 9
+43 7672 72711 - 0
office@ringer.at
www.ringer.at

