



size: 1150×1150×2300mm

weight: 110kg

clean water tank: 160L

waste holding tank: 400L



size: 1200×1150×2300mm

weight: 140kg

clean water tank: 160L

waste holding tank: 280L



size: 1050×1000×2300mm

weight: 100kg

clean water tank: 43L

waste holding tank: 190L



size: 1100×1000×2300mm

weight: 88kg

clean water tank: 43L

waste holding tank: 190L



Plastic base



- size: 1150×1150×2300mm
- weight: 110kg
- clean water tank: 160L
- waste holding tank: 400L

Metal base



- size: 1200×1150×2300mm
- weight: 140kg
- clean water tank: 160L
- waste holding tank: 280L



DOOR AND WALL OPTIONS



GREY DOOR



BLUE DOOR



SINGLE SKIN WALL

7.2kgs/pcs
3.8mm thickness



DOUBLE SKIN WALL (HOLLOW)

12kgs/pcs
29mm thickness



Rotomolding waste tank and base



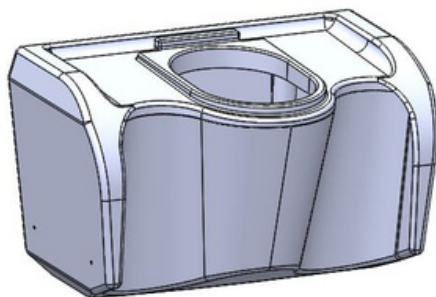
- size: 1050×1000×2300mm
- weight: 100kg
- clean water tank: 43L
- waste holding tank: 190L

Injection waste tank and base

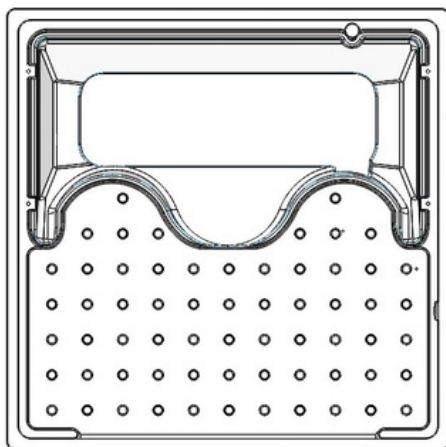


- size: 1100×1000×2300mm
- weight: 88kg
- clean water tank: 43L
- waste holding tank: 190L

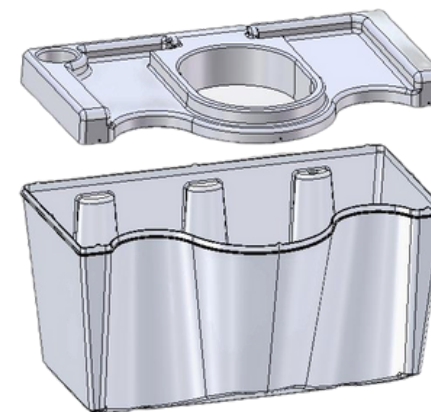




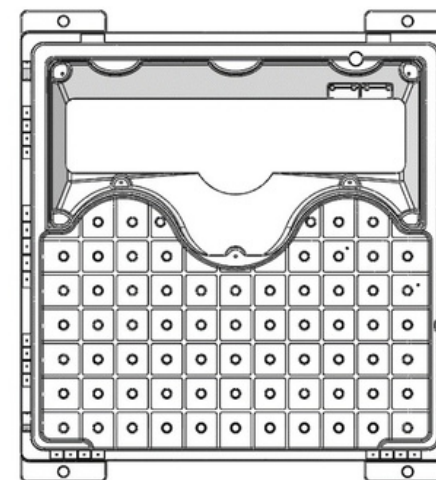
The waste tank is integrally formed.



The base without lifting hole position.



The waste tank is a split-type structure.



The waste tank with four lifting hole position.





GRAY DOOR



BLUE DOOR



GRAY WALL

7.2kgs/pcs
3.8mm thickness



RED WALL

7.2kgs/pcs
3.8mm thickness

